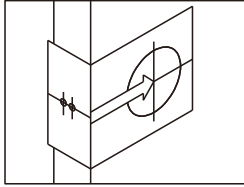


INSTRUCTIONS FOR INSTALLATION OF TUBULAR LOCKSETS OR LEVERSETS

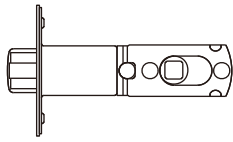
FOR USE ON DOORS (32mm~45mm)THICK

1. ADJUSTABLE LATCH FOR 60mm AND 70mm BACKSET

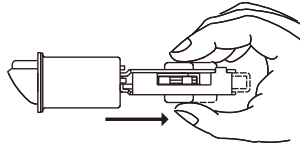


Backset is a distance from door edge to centre of hole on door face. Some locks are supplied with adjustable latch which can fit 60mm or 70mm backset. Just follow the steps shown below to change backset.

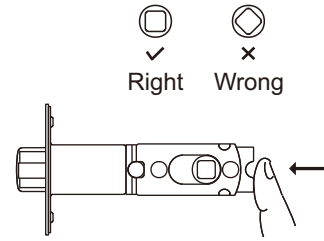
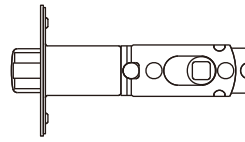
a



b



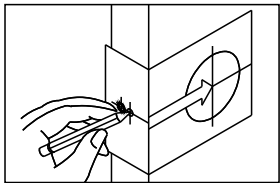
c



Latch Backset Adjustment

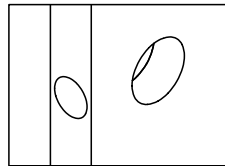
- a. This latch is set for 60mm backset.
- b. Keep spindle cam in correct position as illustrated.
Pull spindle cam all the way to right.
- c. Your latch is now set for 70mm backset.
To reset 60mm backset, just push spindle cam back to left side.
Please make sure that the cams are staying with square shape.

2. MARK DOOR WITH TEMPLATE



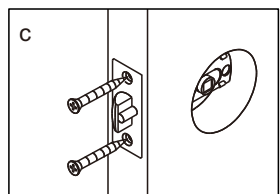
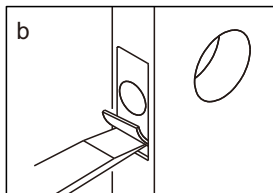
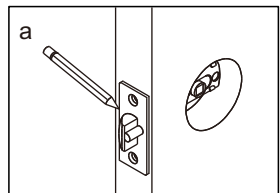
- a. Start 1000mm from floor, and apply template from floor, mark center of door edge.
- b. Select 60mm or 70mm backset as desired and mark centre of hole on door face.

3. DRILL HOLES



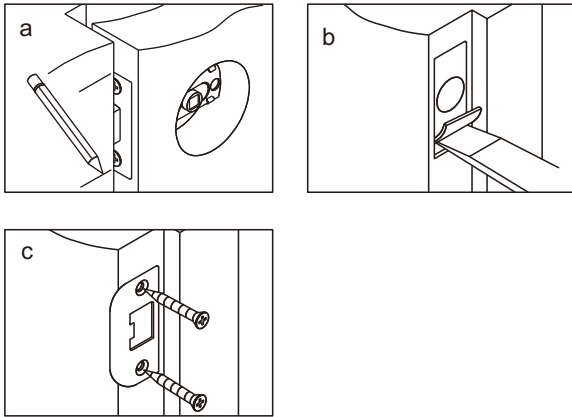
- a. Drill 54mm hole through door face, from both sides to avoid wood splitting.
- b. Drill 25.4mm hole for latch.

4. INSTALL LATCH



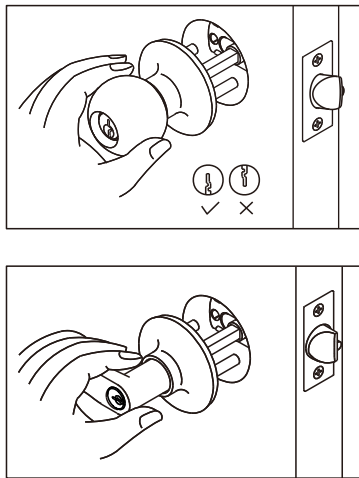
- a. Insert latch in hole and keep it parallel to door face.
Mark outline of face plate and remove latch.
- b. Chisel 4mm deep inside traced outline or until face plate is flush with door edge.
- c. Insert latch and tighten screw.

5. INSTALL STRIKE



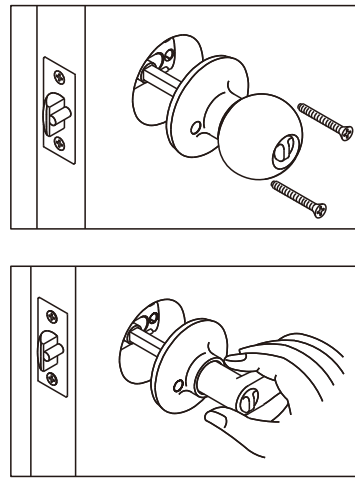
- a. Close door to make horizontal center line of strike.
- b. Measure one half of door thickness from door stop and vertically mark center line of strike.
Drill 25.4mm hole, 25.4mm deep at intersection of horizontal and vertical line of strike.
Mark outline using strike plate and chisel 1.6mm deep for strike.
- c. Install strike and tighten screws.

6. INSTALL OUTSIDE KNOB OR LEVER



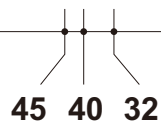
Insert spindle through latch.
Press flush against door.
Note : Key hloe must be in down position.

7. INSTALL INSIDE KNOB OR LEVER



Install inside knob or lever and tighten screws until lock is firm.

TEMPLATE



Mark 25.4mm hole at center of door edge.

FOR 70mm BACKSET

FOR 60mm BACKSET

