

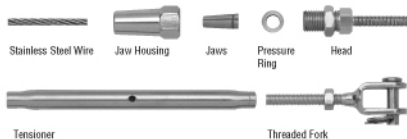
Zenith

**STAINLESS MARINE GRADE
STEEL 316**

Easy fit Balustrade System

Wire Terminal Kit

- No Swaging tools needed



THIS KIT CONTAINS:

Terminal Fitting to grip stainless steel wire.
Tensioner (Turnbuckle) to adjust the tension on the wire.
Threaded Fork to connect to a suitable mounting such as an Eye Saddle, Saddle Plate, Eye Bolt or Screw Eye.

Assembly instructions

1. Unscrew jaw housing from head, taking care not to drop or lose parts.
2. Slide jaw housing onto stainless steel wire.
3. Carefully slide jaws onto stainless steel wire, while keeping all three jaws connected by ring.
4. Place stainless pressure ring on the end of the stainless steel wire. Ensure that the distance from the pressure ring to the

end of the stainless steel wire is 5mm.

5. Slide the jaw housing over the jaws.
6. To assemble terminal, screw head firmly into the jaw housing. Tighten with a spanner.
7. Screw head into tensioner and screw tensioner onto threaded fork.
Note: The threaded fork is a left hand thread. It will only screw into the matching end of the tensioner.
8. Tighten lock nut firmly with a spanner.
9. Attach fork to anchoring point.
10. To tension wire, insert the tensioner bar and twist in a clockwise direction. (Tensioner bar included)

IMPORTANT NOTE:

To avoid corrosion of the internal fittings sealing the unit with a non acidic one-component polyurethane (e.g. Sikaflex® 221) is essential.

After the first dynamic load the terminal must be tightened again.

CAUTION

Jaws should not be re-used.
Ensure the dimensions of the terminal and stainless steel wire match.

MAINTENANCE

Check the terminal regularly for damage. Exposure to concentrated salt water or polluted surroundings, can effect the seal. If it is broken remove the sealing compound. Then rinse the terminal with fresh water and treat with WD40. Re-seal the terminal with non-acidic one-component polyurethane.