



O800122



O800139



O800092



O800177



O811166



O811180



O811203



O811319



O811326



O811357



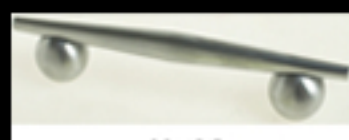
O811371



O811388



O811395



O811517

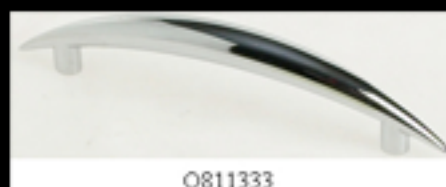
CATA CODE	DESCRIPTION	CENTRES MM	DIA MM	HEIGHT MM
CONTEMPORARY HANDLES				
O800122	HANDLE SATIN CHROME 128MM PK1	128	17	30
O800139	HANDLE POLISH CHROME 96MM PK1	96	12	28
O800092	HANDLE SATIN CHROME 64MM PK1	64	12	25
O800177	HANDLE SATIN CHROME 96MM PK1	96	12	27
O811166	HANDLE POLISHED CHROME 96MM PK1	96	22	29
O811180	HANDLE POLISHED CHROME 96MM PK1	96	8	30
O811203	HANDLE BRUSHED SATIN CHROME 96M	96	8	30
O811319	HANDLE POLISHED CHROME 31MM PK1		31	26
O811326	HANDLE SATIN CHROME 31MM PK1		31	26
O811357	HANDLE POLISHED CHROME 96MM PK1	96		24
O811371	HANDLE SATIN CHROME 96MM PK1	96		24
O811388	HANDLE POLISHED CHROME 16MM PK1	16		15
O811395	HANDLE SATIN CHROME 16MM PK1	16		15
O811517	HANDLE BRUSHED SATIN CHROME 96M	96	22	29



O800283



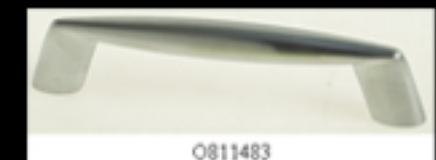
O811210



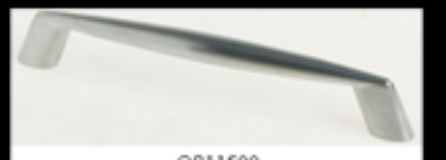
O811333



O811340



O811483



O811500



O811524



O811043



O811111



O811449



O811456



O826245



O826252



O826269

CATA CODE	DESCRIPTION	CENTRES MM	DIA MM	HEIGHT MM
CONTEMPORARY HANDLES				
O800283	HANDLE SATIN NICKEL 96MM PK1	128	15	30
O811210	HANDLE POLISHED CHROME 96MM PK1	96		27
O811333	HANDLE POLISHED CHROME 96MM PK1	128	15	30
O811340	HANDLE SATIN CHROME 96MM PK1	128	15	30
O811483	HANDLE BRUSHED SATIN CHROME 96MM PK1	96	11	28
O811500	HANDLE BRUSHED SATIN CHROME 128MM PK1	128	11	29
O811524	HANDLE SATIN CHROME 96MM PK1	96		27
CONTEMPORARY HANDLES				
O811043	HANDLE BRUSHED SATIN CHROME 96MM PK1	96	13	28
O811111	HANDLE BRUSHED SATIN CHROME 96MM PK1	96	9	27
O811449	HANDLE POLISHED CHROME 96MM PK1	96	12	23
O811456	HANDLE SATIN CHROME 96MM PK1	96	12	23
O826245	HANDLE BOW POLISHED CHROME 96MM PK1	96	13	28
O826252	HANDLE BOW SATIN NICKEL 96MM PK1	96	13	28
O826269	HANDLE BOW GOLD 96MM PK1	96	13	28